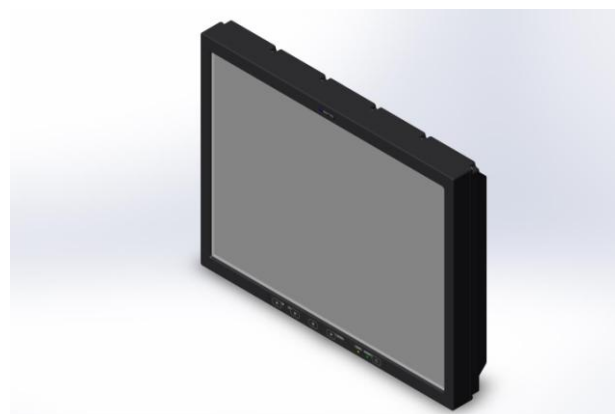


# Technical datasheet

- ▶ Rugged Monitor (VESA mount)
- ▶ 20" Monitor 1600x1200 (LED BL system)
- ▶ MIL-STD 461 / MIL-STD 810
- ▶ TL 351 compatible



Part no.: 32-165-00-22  
 Description: BRL 720-0403SVM-AC

preliminary  
 Ver.: 0.9

Optical Characteristic	Power Supply
Display Diagonal: 20" (50,8 cm)	Input voltage: 115 / 230 VAC, 50/60 Hz
Resolution: 1600 x 1200 (4:3)	Connector: MS27466 T 09F98P /38999
Viewing angle: L/R/U/D 85°/85°/85°/85°	Grounding: M4 ground stud
Color Depth: 16 Mio. Color / 256 gray scale	Power consumption :
Contrast typ.: 1000:1	VA typ.: 85 VA
Response time typ.: 25ms (25°C)	Watt typ.: 45 W
Brightness typ.: 250 cd/m <sup>2</sup>	Environment
Dimming: 100 to 0%	Temperature:
	Operating : -15 to 55°C
	Storage : -32 to +71°C
Interfaces / connections	Humidity: 5-95% @40°C (not condensing)
RGB: 1 x VGA ; (15 p. HD-Sub)	
DVI: 1 x DVI ; (DVI-I)	EMI/EMC: CE;EN 55022;EN 61000-6-2
DP: 1 x Display Port ; (DisplayPort)	MIL-STD 461 (BTM, naval below deck)
Serial: 1 x RS232 (remote) ; (9 p. D-Sub)	Vibration: MIL-STD 810 10-57HZ / 0,076mm 57-500Hz / 9,8m/s <sup>2</sup> (BTM)
Video: Option	Shock: MIL-STD 810 +/- 20G/10ms x/y/z half sine (BTM)
OSD Keyboard: Foil keyboard (front side)	Other
Combat dimmer: Backlight and status LED can be switched on/off with a single pushbutton	MTBF: 28400 hour , Naval Sheltered @25°C
	Ground concept: Grounded (logic ground connected to chassis)
Front & Chassis	Qualification
Aluminum housing: Front plate IP 65 / cabinet IP 54	CE
Cooling concept: Passive cooling (no fan, no noise)	MIL-STD 461-D (BTM);MIL-STD 810 (BTM)
Finish: RAL 9005 (black)	
Protection glass: AR coated glass pane w. EMC filter	Options
Mounting: VESA mount	Circular connector;customization on request;DC Power input;several mounting options;Stands
Dimension in mm: (HxWxD) 354 / 448 / 69,5 mm	Accessory
Weight in kg: tbd	

